

## *SECTION 5*

# ***ACCESSORIES***



## Accessories

### Clamps

#### PVC Clamps

##### Cushion



PC | Page 310

##### Double Cushion



PCD | Page 311

### Stainless Steel Hose Clamp

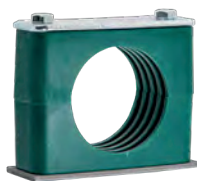
#### Ultra Heavy Duty



SC-W2 | Page 311

#### Ribbed

##### Single Ribbed



SINGLE | Page 312

##### Double Ribbed



DOUBLE | Page 313

#### Heavy Duty Single Ribbed UV Resistant



HD SINGLE | Page 314

### Smooth Bore

#### Single UV Resistant Smooth Bore



SINGLE SB | Page 314

#### Double UV Resistant Smooth Bore



DOUBLE SB | Page 315

### Clamp Accessories

### Stacking Bolt

#### To Suit Single Clamp



SB-G | Page 316

#### To Suit Double Clamp



SB-D | Page 316

### Stacking Plate

#### To Suit Single Clamp



SP-G | Page 316

#### To Suit Double Clamp



SP-D | Page 316

### Hose Protection

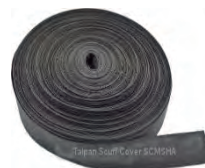
#### Hose Sleeve

##### Scuff Cover



SCMSHA | Page 317

##### Safe Sleeve



SSMSHA | Page 318

##### Fast Wrap


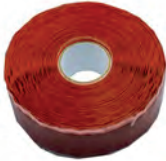



















FASTWRAP | Page 318





## Accessories

<b>Fire Sleeve</b>  <p><b>FS</b>   Page 319</p>	<b>Fire Sleeve Tape</b>  <p><b>FS-TAPE</b>   Page 319</p>	<b>Spring Guard</b>  <p><b>TSG</b>   Page 319</p>	<b>Spiral Guard</b>  <p><b>RSSG</b>   Page 320</p>	<b>Crimp Rings For Hose Sleeve</b>  <p><b>FCC</b>   Page 320</p>
<b>Ties</b>	<b>Bundle Straps</b>  <p><b>TBS</b>   Page 321</p>	<b>Nylon Zipties</b>  <p><b>ZIPTIE</b>   Page 321</p>	<b>Stainless Steel Zipties</b>  <p><b>ZIPTIE (SS)</b>   Page 321</p>	<p>MORE PRODUCTS COMING SOON</p>
<b>Bend Restrictors</b>	<b>Vinyl Bend Restrictors</b>  <p><b>VBR</b>   Page 322</p>	<b>Plastic Caps</b>	<b>BSP Plastic Caps</b>  <p><b>BC</b>   Page 322</p>	<b>JIC Plastic Caps</b>  <p><b>JC</b>   Page 322</p>
<b>Code 61 Plastic Caps</b>  <p><b>F61PC</b>   Page 323</p>	<b>Code 62 Plastic Caps</b>  <p><b>F62PC</b>   Page 323</p>	<b>Heat Shrink Caps</b>  <p><b>CSC-P</b>   Page 323</p>	<b>Plastic Plugs</b>	<b>BSP Plastic Plugs</b>  <p><b>BP</b>   Page 323</p>
<b>JIC Plastic Plugs</b>  <p><b>JP</b>   Page 324</p>	<b>ORFS Plastic Plugs</b>  <p><b>JP - ORFS</b>   Page 324</p>	<b>Seals / O'Rings / Retaining Rings</b>	<b>BSPP</b>  <p><b>BO</b>   Page 325</p>	<b>BSPP Retaining Ring</b>  <p><b>BRR</b>   Page 325</p>

## Accessories

BSPP ED



OR-ED | Page 326

ORFS Male D90



ORORFS | Page 326

SAE Flange D90



ORFL | Page 326

Cat Flange D90



ORFL-CAT | Page 327

UNO D90



ORUNO | Page 327

Metric DIN



ORM | Page 327

BSP Self Centring Seal



QD | Page 328

Metric Self Centring Seal



QDM | Page 328

**Dowty Washer  
and  
O'Ring Kits**



QD KIT | Page 329

O'Ring Kits



ORK | Page 329

**High  
Pressure  
Ball Valves**

**Straight  
HPBV**

Straight



HPBV | Page 329

MORE PRODUCTS  
COMING SOON

**Three Way  
HPBV**



HPBV3-L | Page 330

T Port



HPBV3-T | Page 330

**HPBV  
Accessories**

Handle



HPBV HANDLES | Page 330

**Taimi Live  
Swivels**

**Straight  
Swivels**

BSPP Male/Female



SZ-PM-PF | Page 331

BSPP Male/Male



SZ-PM-PM | Page 331

JIC Male/Female



SZ-JM-JF | Page 331



**TAIPAN**



## Accessories

JIC Male/Male



SZ-JM-JM | Page 331

ORFS Male/Female



SZ-SM-SF | Page 331

ORFS Male/Male



SZ-SM-SM | Page 332

90 Degree Swivels

ORFS M x UNO F/M



SZ90-SM-BF | Page 332

BSPP M x UNO F/M



SZ90-PM-BF  
Page 332

Taimi Swivel Seal Kits

Seal Kit



SZ-001SK-A | Page 332

MORE PRODUCTS  
COMING SOON

MORE PRODUCTS  
COMING SOON

Test

Test Kits

Analogue



TEST KIT ANALOGUE  
Page 333

Digital



TEST KIT DIGITAL  
Page 333

MORE PRODUCTS  
COMING SOON

DN2 Test Hose

DN2 - Test



TEST DN2 63 MPA  
Page 333

DN2 Hose Tails

Straights

DN2-BSP



TG  
Page 333

DN2-Test 20



TM16  
Page 333

DN2-JIC



TJF  
Page 334

DN2-Metric



TM  
Page 334

DN2-Crimp Ferrule



TDN2SHELL | Page 334

MORE PRODUCTS  
COMING SOON

Can't find what you're looking for?

1300 654 782

## Accessories

### 90 Degree

DN2-BSP



TG | Page 333

DN2-Test 20



TM16 | Page 333

### DN2 Test Hose Accessories

DN2-Plugs and Caps



TC | Page 334

### Gauges

Analogue Pressure  
Gauges



PG | Page 335

Digital Pressure Gauges



PG-DG | Page 336

### Gauge Accessories

Protective Boot



DIGIBOOT | Page 336

Gauge Bracket



Pressure Gauge Bracket DN63  
Page 336

Gauge Adaptor



QAAE-G | Page 336

### Diagnostic Test Points

Interchange 620 BAR



KQTPE/D/P | Page 337

Interchange 420 BAR



KQFFTP-F/M | Page 337

### Test Tees

BSPP F x BSPP M x  
UNO F



QTEADPFS | Page 338

JIC F S/W x JIC M x  
UNO F



QTEKLPFS | Page 338

ORFS F x ORFS M x  
UNO F



QTEVWPFS | Page 338

MORE PRODUCTS  
COMING SOON

MORE PRODUCTS  
COMING SOON

MORE PRODUCTS  
COMING SOON

MORE PRODUCTS  
COMING SOON

MORE PRODUCTS  
COMING SOON

MORE PRODUCTS  
COMING SOON



TAIPAN





# ***NO WORRIES WARRANTY***

*We're serious about our goal of zero product failures.*

At Taipan, we offer an utterly reliable product warranty. In the unlikely event that you encounter a problem, we will work with you to resolve issues efficiently and help you support your customers. Once the dust settles, we will work with you to get to the bottom of the problem.

Warranty claims are few and far between at Taipan.

If we do get one, we will never challenge its legitimacy.

But we do ask customers to cooperate with us in investigating what may have caused the problem. Working together, we can identify what went wrong, this supports our ongoing quality control and continuous improvement programmes. Thank-you!

If you have questions about our outstanding product reliability or our No Worries Warranty, give us a call **1300 654 782** or [sales@taipan.com.au](mailto:sales@taipan.com.au)



**TAIPAN**  
Hydraulic Hose Systems



## Clamps

### PVC

#### PVC

#### Single Cushion



Heavy Duty PVC Clamp -  
Australian made to AS1977  
TYPE 3/105T. Stainless -  
made to order.

Part Number	Tube Size	Band Width	Hole Size
PC6-1610	6MM	16MM	10MM
PC10-1910	10MM	19MM	10MM
PC12-1910	12MM	19MM	10MM
PC13-1910	13MM	19MM	10MM
PC14-1910	14MM	19MM	10MM
PC15-1910	15MM	19MM	10MM
PC16-1910	16MM	19MM	10MM
PC18-1910	18MM	19MM	10MM
PC22-2513	22MM	25MM	13MM
PC23-2513	23MM	25MM	13MM
PC25-2513	25MM	25MM	13MM
PC28-2513	28MM	25MM	13MM
PC29-2513	29MM	25MM	13MM
PC30-2513	30MM	25MM	13MM
PC32-2513	32MM	25MM	13MM
PC35-2513	35MM	25MM	13MM
PC36-2513	36MM	25MM	13MM
PC38-2513	38MM	25MM	13MM
PC40-2513	40MM	25MM	13MM
PC45-2513	45MM	25MM	13MM
PC46-2513	46MM	25MM	13MM
PC51-2513	51MM	25MM	13MM
PC60-2513	60MM	25MM	13MM
PC67-2513	67MM	25MM	13MM
PC70-2513	70MM	25MM	13MM
PC90-2513	90MM	25MM	13MM





## Clamps

### PVC



Heavy Duty PVC Double Cushion Clamp - Australian made to AS1977 TYPE 3/105T. Stainless - made to order.

#### Double Cushion

Part Number	Tube Size	Band Width	Hole Size
PCD20-2513	20 x 2MM	25MM	13MM
PCD28-2513	28 x 2MM	25MM	13MM
PCD29-2513	29 x 2MM	25MM	13MM
PCD38-2513	38 x 2MM	25MM	13MM
PCD42-2513	42 x 2MM	25MM	13MM

### Stainless Steel Hose Clamps

#### SS Hose Clamps



W2 - Stainless band with mild steel bolt.

#### Ultra Heavy Duty (Mikalor brand)

Part Number	Description
SC17-19W2	
SC19-21W2	
SC21-23W2	
SC23-25W2	
SC25-27W2	
SC27-29W2	
SC29-31W2	SUITS 100R4-12
SC31-34W2	
SC34-37W2	
SC37-40W2	SUITS 100R4-16
SC40-43W2	
SC43-47W2	SUITS 100R4-20
SC47-51W2	
SC51-55W2	SUITS 100R4-24
SC55-59W2	
SC59-63W2	
SC63-68W2	SUITS 100R4-32
SC68-73W2	
SC73-79W2	SUITS 100R4-40
SC79-85W2	
SC85-91W2	SUITS 100R4-48
SC91-97W2	

Continued on following page...

## Clamps

### Stainless Steel Hose Clamps

#### SS Hose Clamps

#### Ultra Heavy Duty (Mikalor brand) *Continued...*



W2 - Stainless band with mild steel bolt.

Part Number	Description
SC97-104W2	
SC104-112W2	
SC112-121W2	
SC121-130W2	
SC130-140W2	
SC174-187W2	

### Ribbed - Polypropylene

#### Ribbed - Polypropylene

#### Single



Green ribbed Polypropylene insert.

Part Number	Description	Group
6.4MM SINGLE		1
8MM SINGLE		1
9.5MM SINGLE		1
12MM SINGLE		1
12.7MM SINGLE	SUITS 1/4 ONE WIRE	2
14MM SINGLE	SUITS 1/4 TWO WIRE	2
15MM SINGLE		2
16MM SINGLE		2
18MM SINGLE	SUITS 3/8 ONE WIRE	2
19MM SINGLE	SUITS 3/8 TWO WIRE	3
20MM SINGLE	SUITS 1/2 ONE WIRE	3
22MM SINGLE	SUITS 1/2 TWO WIRE	3
25MM SINGLE		3
25.4MM SINGLE	SUITS 5/8 TWO WIRE	3
26.9MM SINGLE	SUITS 3/4 ONE WIRE	4
28MM SINGLE		4
30MM SINGLE	SUITS 3/4 TWO WIRE	4
32MM SINGLE		5
35MM SINGLE		5
38MM SINGLE	SUITS 1 TWO WIRE	5
42MM SINGLE		5
44.5MM SINGLE		6

*Continued on following page...*



TAIPAN

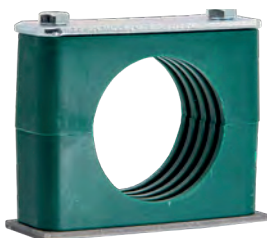


## Clamps

### Ribbed - Polypropylene

#### Ribbed - Polypropylene

#### Single *Continued...*



Green ribbed  
Polypropylene insert.

Part Number	Description	Group
50.8MM SINGLE		6
60.3MM SINGLE		7

#### Ribbed - Polypropylene

#### Double



Green ribbed  
Polypropylene insert.

Part Number	Description	Group
6.4MM DOUBLE		1
8MM DOUBLE		1
9.5MM DOUBLE		1
12.7MM DOUBLE	SUITS 1/4 ONE WIRE	2
14MM DOUBLE	SUITS 1/4 TWO WIRE	2
15MM DOUBLE		2
16MM DOUBLE		2
18MM DOUBLE	SUITS 3/8 ONE WIRE	2
19MM DOUBLE	SUITS 3/8 TWO WIRE	3
20MM DOUBLE	SUITS 1/2 ONE WIRE	3
22MM DOUBLE	SUITS 1/2 TWO WIRE	3
25MM DOUBLE		3
25.4MM DOUBLE	SUITS 5/8 TWO WIRE	3
28MM DOUBLE		4
30MM DOUBLE	SUITS 3/4 TWO WIRE	4
32MM DOUBLE		5
38MM DOUBLE	SUITS 1 TWO WIRE	5
42MM DOUBLE		5

## Clamps

### Ribbed Bore - Polyamide

#### Ribbed - Polyamide



Black UV resistant  
Polyamide insert.

#### Heavy Duty Single *Continued...*

Part Number	Description	Group
25.4MM HD SINGLE	SUITS 5/8 TWO WIRE	2
26.9MM HD SINGLE	SUITS 3/4 ONE WIRE	2
32MM HD SINGLE		3
33.7MM HD SINGLE		3
38MM HD SINGLE	SUITS 1 TWO WIRE	3
42MM HD SINGLE		4
44.5MM HD SINGLE		4
48.3MM HD SINGLE		4
50.8MM HD SINGLE		4
57MM HD SINGLE		4
60.3MM HD SINGLE		4
70MM HD SINGLE		4

### Smooth Bore - Polyamide

#### Smooth Bore - Polyamide



Black UV resistant  
Polyamide insert.

#### Single

Part Number	Description	Group
6.4MM SINGLE SB BLK		1
8MM SINGLE SB BLK		1
9.5MM SINGLE SB BLK		1
12.7MM SINGLE SB BLK	SUITS 1/4 ONE WIRE	2
14MM SINGLE SB BLK	SUITS 1/4 TWO WIRE	2
15MM SINGLE SB BLK		2
16MM SINGLE SB BLK		2
18MM SINGLE SB BLK	SUITS 3/8 ONE WIRE	2
19MM SINGLE SB BLK	SUITS 3/8 TWO WIRE	3
20MM SINGLE SB BLK	SUITS 1/2 ONE WIRE	3
22MM SINGLE SB BLK	SUITS 1/2 TWO WIRE	3
25.4MM SINGLE SB BLK	SUITS 5/8 TWO WIRE	3
28MM SINGLE SB BLK		4
30MM SINGLE SB BLK	SUITS 3/4 TWO WIRE	4
32MM SINGLE SB BLK		5
35MM SINGLE SB BLK		5

*Continued on following page...*





## Clamps

### Smooth Bore - Polyamide

#### Smooth Bore - Polyamide



Black UV resistant  
Polyamide insert.

#### Single *Continued...*

Part Number	Description	Group
38MM SINGLE SB BLK	SUITS 1 TWO WIRE	5
42MM SINGLE SB BLK		5
50.8MM SINGLE SB BLK		6

#### Smooth Bore - Polyamide



Black UV resistant  
Polyamide insert.

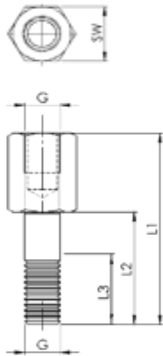
#### Double

Part Number	Description	Group
6.4MM DOUBLE SBBLK		1
8MM DOUBLE SBBLK		1
9.5MM DOUBLE SBBLK		1
12.7MM DOUBLE SBBLK	SUITS 1/4 ONE WIRE	2
14MM DOUBLE SBBLK	SUITS 1/4 TWO WIRE	2
15MM DOUBLE SBBLK		2
16MM DOUBLE SBBLK		2
18MM DOUBLE SBBLK	SUITS 3/8 ONE WIRE	2
19MM DOUBLE SBBLK	SUITS 3/8 TWO WIRE	3
20MM DOUBLE SBBLK	SUITS 1/2 ONE WIRE	3
22MM DOUBLE SBBLK	SUITS 1/2 TWO WIRE	3
25.4MM DOUBLE SBBLK	SUITS 5/8 TWO WIRE	3
28MM DOUBLE SBBLK		4
30MM DOUBLE SBBLK	SUITS 3/4 TWO WIRE	4
32MM DOUBLE SBBLK		5
38MM DOUBLE SBBLK		5

## Clamp Accessories

### Stacking Bolt

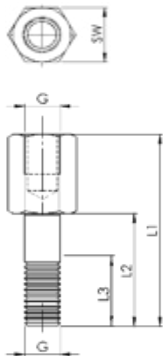
#### Stacking Bolt



#### Single

Part Number	Group	Clamp Size (MM)	L1	L2	L3 min.	SW	G (Thread)
SB-G1	1	6.4, 8, 9.5, 12	34	20	12	11	M6
SB-G2	2	12.7, 14, 15, 16, 18	39	25	12	11	M6
SB-G3	3	19, 20, 22, 25, 25.4	44	30	12	11	M6
SB-G4	4	26.9, 28, 30	48	35	12	11	M6
SB-G5	5	32, 35, 38, 42	64	50	12	11	M6

#### Stacking Bolt

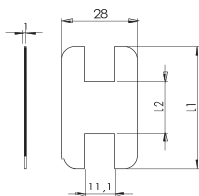


#### Double

Part Number	Group	Clamp Size (MM)	L1	L2	L3 min.	SW	G (Thread)
SB-G1	1	6.4, 8, 9.5, 12	34	20	12	11	M6
SB-DI2	2	12.7, 14, 15, 16, 18	34	20	12	12	M8
SB-DI3	3	19, 20, 22, 25, 25.4	44	29	12	12	M8
SB-DI4	4	28, 30	49	34	12	12	M8
SB-DI5	5	32, 38, 42	61	46	12	12	M8

### Stacking Plates

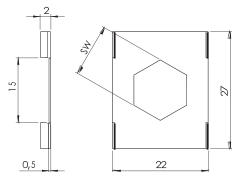
#### Stacking Plates



#### Stacking Plate Single

Part Number	Group	Clamp Size (MM)	L1	L2
SP-G1	1	6.4, 8, 9.5, 12	34	7
SP-G2	2	12.7, 14, 15, 16, 18	40	13
SP-G3	3	19, 20, 22, 25, 25.4	48	20
SP-G4	4	28, 30	57	27
SP-G5	5	32, 35, 38, 42	69	39

#### Stacking Plates



#### Stacking Plate Double

Part Number	Group	Clamp Size (MM)	SW (MM)
SP-DI1	1	6.4, 8, 9.5	11.1
SP-DI2/5	2-5	12.7, 14, 15, 16, 18, 19, 20, 22, 25, 25.4, 28, 30, 32, 38, 40	12.1



## Hose Protection

### Hose Sleeve

#### Hose Sleeve

#### Scuff Cover

MSHA approved, RoHS, ISO6945.

Textile sleeve consists of nylon multifilament, with particularly smooth inner wall. It reduces frictional resistance problems and the tight woven construction helps disperse the fluid in a ruptured hose.

Operating temperature -50°C to 150°C, melting point 240°C.

Material - Nylon.



Part Number	Description	Roll Size (M)
SCMSHA-ID17	SCUFF COVER MSHA 17MM I.D (30MM FLAT) -50 TO 150 DEG	50M
SCMSHA-ID20	SCUFF COVER MSHA 17MM I.D (36MM FLAT) -50 TO 150 DEG	50M
SCMSHA-ID23	SCUFF COVER MSHA 23MM I.D (40MM FLAT) -50 TO 150 DEG	50M
SCMSHA-ID25	SCUFF COVER MSHA 27MM I.D (43MM FLAT) -50 TO 150 DEG	50M
SCMSHA-ID27	SCUFF COVER MSHA 27MM I.D (45MM FLAT) -50 TO 150 DEG	50M
SCMSHA-ID30	SCUFF COVER MSHA 30MM I.D (52MM FLAT) -50 TO 150 DEG	50M
SCMSHA-ID33	SCUFF COVER MSHA 33MM I.D (55MM FLAT) -50 TO 150 DEG	50M
SCMSHA-ID36	SCUFF COVER MSHA 36MM I.D (60MM FLAT) -50 TO 150 DEG	50M
SCMSHA-ID40	SCUFF COVER MSHA 40MM I.D (66MM FLAT) -50 TO 150 DEG	50M
SCMSHA-ID44	SCUFF COVER MSHA 44MM I.D (74MM FLAT) -50 TO 150 DEG	50M
SCMSHA-ID47	SCUFF COVER MSHA 47MM I.D (77MM FLAT) -50 TO 150 DEG	50M
SCMSHA-ID53	SCUFF COVER MSHA 53MM I.D (86MM FLAT) -50 TO 150 DEG	50M
SCMSHA-ID55	SCUFF COVER MSHA 55MM I.D (90MM FLAT) -50 TO 150 DEG	50M
SCMSHA-ID60	SCUFF COVER MSHA 60MM I.D (98MM FLAT) -50 TO 150 DEG	50M
SCMSHA-ID66	SCUFF COVER MSHA 66MM I.D (106MM FLAT) -50 TO 150 DEG	50M
SCMSHA-ID73	SCUFF COVER MSHA 73MM I.D (118MM FLAT) -50 TO 150 DEG	50M
SCMSHA-ID78	SCUFF COVER MSHA 78MM I.D (126MM FLAT) -50 TO 150 DEG	50M
SCMSHA-ID85	SCUFF COVER MSHA 85MM I.D (136MM FLAT) -50 TO 150 DEG	50M
SCMSHA-ID94	SCUFF COVER MSHA 94MM I.D (150MM FLAT) -50 TO 150 DEG	50M
SCMSHA-ID112	SCUFF COVER MSHA 112MM I.D (178MM FLAT) -50 TO 150 DEG	50M



## Hose Protection

### Hose Sleeve

#### Hose Sleeve

#### Safe Sleeve

MSHA approved. Meets the requirements of ISO 3457, EN4413 and EN1299.  
Recommended for use to protect personnel near by from hose burst (pin hole tested).  
Recommended temperature range -40°C to 120°C - UV resistant.  
Material - Polyester.



Part Number	Description	Roll Size (M)
SSMSHA-ID17	SAFE SLEEVE MSHA 17MM I.D (27MM FLAT) -40 TO 120 DEG	50M
SSMSHA-ID23	SAFE SLEEVE MSHA 23MM I.D (36MM FLAT) -40 TO 120 DEG	50M
SSMSHA-ID27	SAFE SLEEVE MSHA 27MM I.D (42MM FLAT) -40 TO 120 DEG	50M
SSMSHA-ID30	SAFE SLEEVE MSHA 30MM I.D (50MM FLAT) -40 TO 120 DEG	50M
SSMSHA-ID39	SAFE SLEEVE MSHA 39MM I.D (62MM FLAT) -40 TO 120 DEG	50M
SSMSHA-ID46	SAFE SLEEVE MSHA 46MM I.D (73MM FLAT) -40 TO 120 DEG	50M
SSMSHA-ID55	SAFE SLEEVE MSHA 55MM I.D (87MM FLAT) -40 TO 120 DEG	50M
SSMSHA-ID62	SAFE SLEEVE MSHA 62MM I.D (98MM FLAT) -40 TO 120 DEG	50M
SSMSHA-ID78	SAFE SLEEVE MSHA 78MM I.D (123MM FLAT) -40 TO 120 DEG	50M
SSMSHA-ID109	SAFE SLEEVE MSHA 109MM I.D (172MM FLAT) -40 TO 120 DEG	50M
SSMSHA-ID125	SAFE SLEEVE MSHA 125MM I.D (197MM FLAT) -40 TO 120 DEG	50M

#### Hose Sleeve

#### Fast Wrap

Taipan Fastwrap sleeve is made from 100% PA6 textile sleeve with PU coating and hook and loop fasteners. Comes in 25M rolls. Hook and loop design provides a quick and easy solution for bundling hose groups together. It can be used to protect cylinder rods from damage or contamination prolonging seal life. It can also be used for many other applications. Sleeve can be cut using standard scissors. A heat gun is useful for sealing the cut edge. **NOTE: Sold in full roll lengths only.**



Part Number	Description	Roll Size (M)
FASTWRAP-25	FASTWRAP SLEEVE 25MM I.D	25M
FASTWRAP-50	FASTWRAP SLEEVE 50MM I.D	25M
FASTWRAP-75	FASTWRAP SLEEVE 75MM I.D	25M
FASTWRAP-100	FASTWRAP SLEEVE 100MM I.D	25M
FASTWRAP-125	FASTWRAP SLEEVE 125MM I.D	25M
FASTWRAP-150	FASTWRAP SLEEVE 150MM I.D	25M
FASTWRAP-175	FASTWRAP SLEEVE 175MM I.D	25M
FASTWRAP-200	FASTWRAP SLEEVE 200MM I.D	25M



## Hose Protection

### Hose Sleeve

#### Hose Sleeve

#### Fire Sleeve

Taipan fire sleeve is the perfect choice for protecting industrial hydraulic hoses, pneumatic lines, fuel and oil hoses, brake hoses, wires and cables from exposure to high temperature heat or flames. Constructed from fibreglass yarn with a high grade silicone rubber coating.

Working temperature: 260°C (continuous), peak temperature 1650°C.



Part Number	Description	Roll Size (M)
FS-15MM	FIRE SLEEVE RED SILICON 15MM I.D	20M
FS-20MM	FIRE SLEEVE RED SILICON 20MM I.D	20M
FS-28MM	FIRE SLEEVE RED SILICON 28MM I.D	20M
FS-35MM	FIRE SLEEVE RED SILICON 35MM I.D	20M
FS-50MM	FIRE SLEEVE RED SILICON 50MM I.D	20M

#### Hose Sleeve

#### Fire Sleeve Tape



Part Number	Description	Roll Size (M)
FS-TAPE-25MM	FIRE SLEEVE TAPE 0.5 X 25MM X 10M RED	10M

Silicone self-fusing tape for finishing ends of fire sleeve on hose.

#### Hose Sleeve

#### Spring Guard



Part Number	I.D. (MM)	Pitch (MM)	Wire Size (MM)	Roll Size (M)
TSG-17	17	3.0	1.8	10M
TSG-22	22	4.0	1.8	10M
TSG-25	25	4.0	1.8	10M
TSG-32	32	6.0	2.0	10M
TSG-36	36	6.0	2.0	10M
TSG-41	41	8.0	2.5	5M
TSG-44	44	8.0	2.5	5M
TSG-51	51	8.0	3.0	5M
TSG-54	54	10.0	3.0	5M
TSG-59	59	10.0	3.0	5M
TSG-62	62	12.0	3.0	5M

Only sold by the roll

Can't find what you're looking for?

**1300 654 782**

## Hose Protection

### Hose Sleeve

#### Hose Sleeve

#### Spiral Guard

General purpose flat spiral guard - made from High Density Polyethylene (HDPE).

Suitable for use -40°C to 80°C.

Oil resistant and UV resistant - Black.

Other colours and FRAS rated available on request.



Part Number	I.D. (MM)	O.D. (MM)	Roll Size (M)
R10SSG	7.0	9.0	50
R12SSG	9.5	12.5	50
R16SSG	12.5	16.0	20
R16SSG-YELLOW	12.5	16.0	50
R20SSG	16.0	20.0	20
R20SSG-YELLOW	16.0	20.0	50
R25SSG	21.0	25.0	20
R25SSG-YELLOW	21.0	25.0	50
R32SSG	27.0	32.0	20
R32SSG-YELLOW	27.0	32.0	50
R40SSG	34.0	40.0	20
R40SSG-YELLOW	34.0	40.0	50
R50SSG	44.0	50.0	20
R50SSG-YELLOW	44.0	50.0	50
R63SSG	55.0	63.0	20
R75SSG	66.0	75.0	20
R90SSG	79.0	90.0	20
R110SSG	99.0	110.0	12
R110SSG-YELLOW	99.0	110.0	12
R125SSG	114.0	125.0	12

#### Hose Sleeve

#### FCC Crimp Rings



For attaching SCMSHA & SSMSHA. Material - Mild steel Cr3 plated.

Part Number	I.D. (MM)
FCC04	25MM
FCC06/08	32MM
FCC10/12	38MM
FCC16	48MM
FCC20	59MM
FCC24	65MM
FCC32	82MM





## Hose Protection

### Ties

#### Ties / Restraints

#### Bundle Straps

Bundling strap is made from 25MM width of polypropylene textile sleeve with a steel buckle. It can hold up to 2450N (200KG) weight. This product is widely used to bundle hydraulic hose or other cables. It can be quickly and easily assembled and dismantled. It can also be reused more than once.

Part Number	Strap Length
TBS600	600MM
TBS800	800MM
TBS1000	1000MM
TBS1500	1500MM
TBS5000	5000MM



#### Ties / Restraints

#### Nylon Zipties

Part Number	Description	Unit
ZIPTIE 100 X 2.5 X 100	ZIPTIE 100 X 2.5	BAG OF 100
ZIPTIE 100 X 3.6 X 100	ZIPTIE 100 X 3.6	BAG OF 100
ZIPTIE 200 X 2.5 X 100	ZIPTIE 200 X 2.5	BAG OF 100
ZIPTIE 200 X 4.8 X 100	ZIPTIE 200 X 4.8	BAG OF 100
ZIPTIE 280 X 4.8 X 100	ZIPTIE 280 X 4.8	BAG OF 100
ZIPTIE 300 X 4.8 X 100	ZIPTIE 300 X 4.8	BAG OF 100
ZIPTIE 200 X 7.2 X 100	ZIPTIE 200 X 7.2	BAG OF 100
ZIPTIE 370 X 7.2 X 100	ZIPTIE 370 X 7.2	BAG OF 100
ZIPTIE 450 X 7.2 X 100	ZIPTIE 450 X 7.2	BAG OF 100
ZIPTIE 550 X 7.2 X 100	ZIPTIE 550 X 7.2	BAG OF 100
ZIPTIE 550 X 9 X 100	ZIPTIE 550 X 9	BAG OF 100
ZIPTIE 750 X 9 X 100	ZIPTIE 750 X 9	BAG OF 100
ZIPTIE 1000 X 9 X 100	ZIPTIE 1000 X 9	BAG OF 100
ZIPTIE 900 X 12 X 100	ZIPTIE 900 X 12	BAG OF 100



#### Ties / Restraints

#### Stainless Steel (316) Zipties

Part Number	Description	Unit
ZIPTIE-SS 200 X 4.6 X 100	ZIPTIE-SS 200 X 4.6	BAG OF 100
ZIPTIE-SS 350 X 4.6 X 100	ZIPTIE-SS 350 X 4.6	BAG OF 100
ZIPTIE-SS 300 X 8 X 100	ZIPTIE-SS 300 X 8	BAG OF 100
ZIPTIE-SS 400 X 8 X 100	ZIPTIE-SS 400 X 8	BAG OF 100



Can't find what you're looking for?

**1300 654 782**

## Hose Protection

### Bend Restrictors

#### Bend Restrictors

#### Vinyl Bend Restrictors

Made from high quality PVC.

Temperature rating -40°C to 90°C.

Widely used for pressure wash and jacking hose assemblies to reduce the bending stress near the hose coupling. This added protection prevents damage to the hose and ultimately extends the life cycle of the hose.



Part Number	Length	Min Hose O.D (MM)	Max Hose O.D (MM)
VBR-0095	134.6MM	9.5	14.6
VBR-0150	140MM	15.0	17.5
VBR-0175	152.4MM	17.5	19.0
VBR-0190	177.8MM	19.0	21.0

### Plastic Caps

#### Plastic Caps

#### BSP Plastic Caps



Part Number	Description
BC-04	BSP PLASTIC CAP 1/4 BSP
BC-06	BSP PLASTIC CAP 3/8 BSP
BC-08	BSP PLASTIC CAP 1/2 BSP
BC-12	BSP PLASTIC CAP 3/4 BSP
BC-16	BSP PLASTIC CAP 1 BSP
BC-20	BSP PLASTIC CAP 1 1/4 BSP
BC-24	BSP PLASTIC CAP 1 1/2 BSP
BC-32	BSP PLASTIC CAP 2 BSP

#### Plastic Caps

#### JIC



Part Number	Description
JC-07	PLASTIC CAP 7/16 JIC
JC-09	PLASTIC CAP 9/16 JIC
JC-12	PLASTIC CAP 3/4 JIC
JC-14	PLASTIC CAP 7/8 JIC
JC-17	PLASTIC CAP 1 1/16 JIC
JC-21	PLASTIC CAP 1 5/16 JIC
JC-26	PLASTIC CAP 1 5/8 JIC
JC-30	PLASTIC CAP 1 7/8 JIC



## Hose Protection

### Plastic Caps

#### Plastic Caps

#### Code 61



Part Number	Description
F61PC-12	PLASTIC CAP CODE 61 X 3/4
F61PC-16	PLASTIC CAP CODE 61 X 1
F61PC-20	PLASTIC CAP CODE 61 X 1 1/4

#### Plastic Caps

#### Code 62



Part Number	Description
F62PC-12	PLASTIC CAP CODE 62 X 3/4
F62PC-16	PLASTIC CAP CODE 62 X 1
F62PC-20	PLASTIC CAP CODE 62 X 1 1/4

#### Plastic Caps

#### Heat Shrink Caps



Part Number	Description
CSC-2030P	CLEAN SEAL CAPSULES FITS 12 TO 18MM HEX
CSC-2224P	CLEAN SEAL CAPSULES FITS 16 TO 21MM HEX
CSC-2527P	CLEAN SEAL CAPSULES FITS 18 TO 23MM HEX
CSC-3133P	CLEAN SEAL CAPSULES FITS 24 TO 29MM HEX
CSC-3840P	CLEAN SEAL CAPSULES FITS 30 TO 36MM HEX
CSC-4345P	CLEAN SEAL CAPSULES FITS 32 TO 41MM HEX
CSC-5260P	CLEAN SEAL CAPSULES FITS 41 TO 50MM HEX
CSC-5860P	CLEAN SEAL CAPSULES FITS 49 TO 56MM HEX
CSC-6760P	CLEAN SEAL CAPSULES FITS 55 TO 65MM HEX
CSC-8060P	CLEAN SEAL CAPSULES FITS 64 TO 78MM HEX

### Plastic Plugs

#### Plastic Plugs

#### BSP



Part Number	Description
BP-04	PLASTIC PLUG BSP 1/4
BP-06	PLASTIC PLUG BSP 3/8
BP-08	PLASTIC PLUG BSP 1/2
BP-12	PLASTIC PLUG BSP 3/4
BP-16	PLASTIC PLUG BSP 1



## Hose Protection

### Plastic Plugs



#### Plastic Plugs

#### JIC

Part Number	Description
JP-07	PLASTIC PLUG 7/16 JICM
JP-09	PLASTIC PLUG 9/16 JICM
JP-12	PLASTIC PLUG 3/4 JICM
JP-14	PLASTIC PLUG 7/8 JICM
JP-17	PLASTIC PLUG 1 1/16 JICM
JP-21	PLASTIC PLUG 1 5/16 JICM
JP-26	PLASTIC PLUG 1 5/8 JICM
JP-30	PLASTIC PLUG 1 7/8 JICM

#### Plastic Plugs

#### ORFS



Part Number	Description
JP-09-ORFS	PLASTIC PLUG 9/16 ORFS
JP-11-ORFS	PLASTIC PLUG 11/16 ORFS
JP-13-ORFS	PLASTIC PLUG 13/16 ORFS
JP-16-ORFS	PLASTIC PLUG 1 ORFS
JP-19-ORFS	PLASTIC PLUG 1 3/16 ORFS
JP-23-ORFS	PLASTIC PLUG 1 7/16 ORFS
JP-27-ORFS	PLASTIC PLUG 1 11/16 ORFS



## Seals / O'Rings / Retaining Rings

### Seals / O'Rings / Retaining Rings



### BSPP O'Ring

Part Number	Size
B002	1/8
B004	1/4
B006	3/8
B008	1/2
B010	5/8
B012	3/4
B016	1
B020	1 1/4
B024	1 1/2
B032	2

### Seals / O'Rings / Retaining Rings



### BSPP Retaining Ring

Part Number	Size
BRR02	1/8
BRR04	1/4
BRR06	3/8
BRR08	1/2
BRR10	5/8
BRR12	3/4
BRR16	1
BRR20	1 1/4
BRR24	1 1/2
BRR32	2

## Seals / O'Rings / Retaining Rings

### Seals / O'Rings / Retaining Rings



### BSPP Encapsulated Seal

Part Number	Size
OR-ED04	1/4
OR-ED06	3/8
OR-ED08	1/2
OR-ED12	3/4
OR-ED16	1
OR-ED20	1 1/4

### Seals / O'Rings / Retaining Rings



### ORFS Male O'Ring D90

Part Number	Size
ORORFS09	9/16
ORORFS11	11/16
ORORFS13	13/16
ORORFS16	1
ORORFS19	1 3/16
ORORFS23	1 7/16
ORORFS27	1 11/16
ORORFS32	2

### Seals / O'Rings / Retaining Rings



### SAE Flange O'Ring D90

Part Number	Size
ORFL08	1/2
ORFL10	5/8
ORFL12	3/4
ORFL16	1
ORFL20	1 1/4
ORFL24	1 1/2
ORFL32	2
ORFL40	2 1/2
ORFL48	3





## Seals / O'Rings / Retaining Rings

### Seals / O'Rings / Retaining Rings

#### CAT Flange D90



D-Ring

Part Number	Size
ORFL12-CAT	3/4
ORFL16-CAT	1
ORFL20-CAT	1 1/4
ORFL24-CAT	1 1/2
ORFL32-CAT	2

### Seals / O'Rings / Retaining Rings

#### UNO O'Ring D90



Part Number	Size
ORUN007	7/16
ORUN009	9/16
ORUN012	3/4
ORUN014	7/8
ORUN017	1 1/16
ORUN021	1 5/16
ORUN026	1 5/8
ORUN030	1 7/8
ORUN040	2 1/2

### Seals / O'Rings / Retaining Rings

#### Metric DIN O'Ring



Part Number	Size
ORM-08LS	08S
ORM-10LS	10LS
ORM-12LS	12LS
ORM-14S	14S
ORM-15L	15L
ORM-16S	16S
ORM-18L	18L
ORM-20S	20S
ORM-22L	22L
ORM-25S	25S
ORM-28L	28L
ORM-30S	30S
ORM-35L	35L
ORM-38S	38S
ORM-42L	42L

## Seals / O'Rings / Retaining Rings

Seals / O'Rings /  
Retaining Rings

### Metric Self Centring Seal

All of our Dowty seals are made from Nitrile NBR. Nitrile is based on Acrylonitrile Butadiene Copolymer material that is resistant to all mineral oils, water and watery liquids. It is also resistant to hot air and numerous other chemicals. Nitrile NBR is a general purpose rubber and is used in a variety of applications. Operating temperature range -30°C to 110°C.



Part Number	Size
QDM-08	8MM
QDM-10	10MM
QDM-12	12MM
QDM-14	14MM
QDM-16	16MM
QDM-18	18MM
QDM-20	20MM
QDM-22	22MM
QDM-24	24MM
QDM-26	26MM
QDM-27	27MM
QDM-30	30MM
QDM-33	33MM
QDM-36	36MM
QDM-42	42MM
QDM-45	45MM
QDM-48	48MM
QDM-52	52MM

Seals / O'Rings /  
Retaining Rings

### Imperial Self Centring Seal



Part Number	Size
QD-02	1/8
QD-04	1/4
QD-06	3/8
QD-08	1/2
QD-10	5/8
QD-12	3/4
QD-16	1
QD-20	1 1/4
QD-24	1 1/2
QD-32	2



TAIPAN

## Dowty Washer & O'Ring Kits

### Dowty Washer



### Metric & Imperial Dowty Washer Kit

Part Number	Description
QD-KIT	BSP BONDED SEAL ASSORTMENT KIT
QDM-KIT	METRIC BONDED SEAL ASSORTMENT KIT

### O'Rings



### Cat D Ring and Metric L/S O'Ring Kit

Part Number	Description
ORK-CAT/METRIC	O'RING KIT CAT + DIN L/S

### O'Rings



### ORFS/UNO/SAE Flange O'Ring Kit

Part Number	Description
ORK-ORFS/UNO/SAE	O'RING KIT ORFS, UNO, SAE

## High Pressure Ball Valves

### Straight HPBV

#### Straight HPBV'S



#### Two Way HPBV

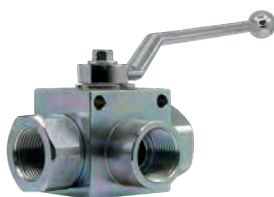
Part Number	Pressure Rating/BAR	Bore Size	Female Thread
HPBV-04	500	1/4	1/4 BSPP
HPBV-06	500	3/8	3/8 BSPP
HPBV-08	500	1/2	1/2 BSPP
HPBV-12	400	3/4	3/4 BSPP
HPBV-16	350	1	1 BSPP
HPBV-16-20	350	1	1 1/4 BSPP
HPBV-16-24	350	1	1 1/2 BSPP
HPBV-32	320	2	2 BSPP



## High Pressure Ball Valves

### Three Way HPBV

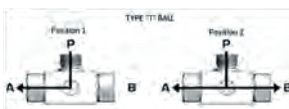
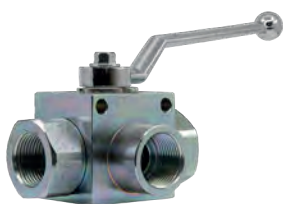
#### 3 Way HPBV'S



#### L Port

Part Number	Pressure Rating/BAR	Bore Size	Female Thread
HPBV3-04L	500	1/4	1/4 BSPP
HPBV3-06L	500	3/8	3/8 BSPP
HPBV3-08L	500	1/2	1/2 BSPP
HPBV3-12L	400	3/4	3/4 BSPP
HPBV3-16L	350	1	1 BSPP

#### 3 Way HPBV'S



#### T Port

Part Number	Pressure Rating/BAR	Bore Size	Female Thread
HPBV3-04T	500	1/4	1/4 BSPP
HPBV3-06T	500	3/8	3/8 BSPP
HPBV3-08T	500	1/2	1/2 BSPP
HPBV3-12T	400	3/4	3/4 BSPP
HPBV3-16T	350	1	1 BSPP

### HPBV Accessories

#### HPBV Accessories



#### Handles

Part Number	Valve to Suit
HPBV-HANDLE-4-8	1/4 - 1/2
HPBV-HANDLE-12-24	3/4 - 1 1/2
HPBV-HANDLE-32	2

## Taimi Live Swivels

### Straight Swivels

#### Straight Swivels

#### BSP Male/Female



Part Number	Description	Thread Size
SZ-P08M-P08F	SWIVEL M/F BSPP 6250PSI	1/2
SZ-P12M-P12F	SWIVEL M/F BSPP 6250PSI	3/4
SZ-P16M-P16F	SWIVEL M/F BSPP 6250PSI	1
SZ-P20M-P20F	SWIVEL M/F BSPP 6250PSI	1 1/4

#### Straight Swivels

#### BSP Male/Male



Part Number	Description	Thread Size
SZ-P12M-P12M	SWIVEL M BSPP 6250PSI	3/4

#### Straight Swivels

#### JIC Male/Female



Part Number	Description	Thread Size
SZ-J06M-JB06F	SWIVEL M/F JIC 6250PSI	9/16
SZ-J08M-JB08F	SWIVEL M/F JIC 6250PSI	3/4
SZ-J10M-JB10F	SWIVEL M/F JIC 6250PSI	7/8
SZ-J12M-JB12F	SWIVEL M/F JIC 6250PSI	1 1/16
SZ-J16M-JB16F	SWIVEL M/F JIC 6250PSI	1 5/16

#### Straight Swivels

#### JIC Male/Male



Part Number	Description	Thread Size
SZ-J06M-J06M	SWIVEL MALE JIC 6250PSI	9/16

#### Straight Swivels

#### ORFS Male/Female



Part Number	Description	Thread Size
SZ-S08M-S08F	SWIVEL M/F ORFS 6250PSI	13/16
SZ-S12M-S12F	SWIVEL M/F ORFS 6250PSI	1 1/16
SZ-S16M-S16F	SWIVEL M/F ORFS 6250PSI	1 7/16

## Taimi Live Swivels

### Straight Swivels

#### Straight Swivels



#### ORFS Male/Male

Part Number	Description	Thread Size
SZ-S06M-S06M	SWIVEL M ORFS 6250PSI	11/16
SZ-S08M-S08M	SWIVEL M ORFS 6250PSI	13/16
SZ-S12M-S12M	SWIVEL M ORFS 6250PSI	1 3/16
SZ-S16M-S16M	SWIVEL M ORFS 6250PSI	1 7/16

### 90 Degree Swivels

#### 90 Degree Swivels



#### ORFS x UNO Female/Male

Part Number	Description	Thread Size Male	Thread Size Female
SZ90-S12M-B12F	SWIVEL 90 DEG MALE ORFS X F/M ORB 6250PSI	1 3/16	1 1/16

#### 90 Degree Swivels



#### BSPP Male x UNO Female

Part Number	Description	Thread Size Male	Thread Size Female
SZ90-P08M-B08F	SWIVEL 90 DEG MALE BSPP X F/M ORB 6250PSI	1/2	3/4
SZ90-P12M-B12F	SWIVEL 90 DEG MALE BSPP X F/M ORB 6250PSI	3/4	1 1/16
SZ90-P16M-B16F	SWIVEL 90 DEG MALE BSPP X F/M ORB 6250PSI	1	1 5/16

### Swivel Accessories

#### Swivel Accessories



#### Taimi Seal Kits

Part Number	Description
SZ-06-001SK-A	SEAL KIT - J06
SZ-08-001SK-A	SEAL KIT - J08
SZ-08-002SK-A	SEAL KIT - S08/P08/F08
SZ-10-001SK-A	SEAL KIT - J10/P10/F10
SZ-12-001SK-A	SEAL KIT - J12/P12/F1
SZ-12-002SK-A	SEAL KIT - S12
SZ-16-001SK-A	SEAL KIT - J16/P16/F16
SZ-16-002SK-A	SEAL KIT - S16





## Test

### Test Kits

#### Test Kits



#### Test Kit Analogue

Part Number	Description
TEST KIT ANALOGUE	3 x GAUGES 3 x TEST HOSE LENGTH: 1.5M - 25MPA - 40MPA - 60MP 6 TEST COUPLINGS: - M10*1 - M14 x 1.5 - G1/4 - R1/4 - UNF 7/16 - NPT 1/4-18

#### Test Kits



#### Test Kit Digital

Part Number	Description
TEST KIT DIGITAL	2 x DIGITAL GAUGES 700BAR 2 x TEST HOSES 1.5M 2 x COUPLERS - CASE/JOHN DEERE * 1/8BSPF - KOMATSU/HITACHI X M14*1.5F 9 TEST COUPLINGS - 1/8 BSPP - M14*1.5 - 1/4 BSPP - 7/16-20UNF - 3/8 BSPP - 9/16-18UNF - M10*1 - 1/4NPT - M10*1.25

### DN2 Test

#### DN2 Test



#### DN2 Test Hose

Part Number	Description	I.D
TESTDN263MPA	DN2 TEST HOSE	2MM

\*Hose Only - Hose tails sold separately

#### DN2 Test



#### DN2 BSP Hose Tails

Part Number	Description	Hose	Thread
TG1/2F	STRAIGHT BSP FEMALE	DN2	1/2 BSPPF (GAUGE)
TG1/2F90	90 DEG BSP FEMALE	DN2	1/2 BSPPF (GAUGE)
TG1/4F	STRAIGHT BSP FEMALE	DN2	1/4 BSPPF (GAUGE)
TG1/4F90	90 DEG BSP FEMALE	DN2	1/4 BSPPF (GAUGE)

#### DN2 Test



#### DN2 Test 20 Hose Tails

Part Number	Description	Hose	Thread
TM16X2F	STRAIGHT TEST 20	DN2	16MM X 2.0 FEMALE
TM16X2F90	90 DEG TEST 20	DN2	16MM X 2.0 FEMALE

Can't find what you're looking for?

**1300 654 782**

## Test

### DN2 Test

#### DN2 Test



#### DN2 JIC Hose Tails

Part Number	Description	Hose	Thread
TJF07F	STRAIGHT JIC FEMALE	DN2	7/16
TJF09F	STRAIGHT JIC FEMALE	DN2	9/16

#### DN2 Test



#### DN2 Metric Hose Tails

Part Number	Description	Hose	Thread
TM06LF	STRAIGHT METRIC FEMALE	DN2	6L (12MM x 1.5)
TM06SF	STRAIGHT METRIC FEMALE	DN2	6S (14MM x 1.5)

#### DN2 Test



#### DN2 Crimp Ferrule

Part Number	Description	Hose
TDN2SHELL	DN2 HOSE CRIMP SHELL	DN2

#### DN2 Test



#### Test Hose Accessories

Part Number	Description
TGPLUG	FERRULE COVER TO SUIT DN2 SHELL
TGCAP	PLASTIC CAP FOR TEST 20 FEMALE



## Test

### Gauges

#### Gauges



63MM - Liquid filled.



#### Analogue Pressure Gauges

Part Number	Description	Pressure PSI	Style
PG63-BE-14.5	PRESSURE GAUGE DN63 1/4 BSPPG	14.5	BOTTOM ENTRY
PG63-BE-23.2	PRESSURE GAUGE DN63 1/4 BSPPG	23.2	BOTTOM ENTRY
PG63-BE-36.25	PRESSURE GAUGE DN63 1/4 BSPPG	36.2	BOTTOM ENTRY
PG63-BE-58	PRESSURE GAUGE DN63 1/4 BSPPG	58	BOTTOM ENTRY
PG63-BE-87	PRESSURE GAUGE DN63 1/4 BSPPG	87	BOTTOM ENTRY
PG63-BE-145	PRESSURE GAUGE DN63 1/4 BSPPG	145	BOTTOM ENTRY
PG63-BE-232	PRESSURE GAUGE DN63 1/4 BSPPG	232	BOTTOM ENTRY
PG63-BE-362.5	PRESSURE GAUGE DN63 1/4 BSPPG	362	BOTTOM ENTRY
PG63-BE-580	PRESSURE GAUGE DN63 1/4 BSPPG	580	BOTTOM ENTRY
PG63-BE-870	PRESSURE GAUGE DN63 1/4 BSPPG	870	BOTTOM ENTRY
PG63-BE-1450	PRESSURE GAUGE DN63 1/4 BSPPG	1450	BOTTOM ENTRY
PG63-BE-2320	PRESSURE GAUGE DN63 1/4 BSPPG	2320	BOTTOM ENTRY
PG63-BE-3625	PRESSURE GAUGE DN63 1/4 BSPPG	3625	BOTTOM ENTRY
PG63-BE-5800	PRESSURE GAUGE DN63 1/4 BSPPG	5800	BOTTOM ENTRY
PG63-BE-8700	PRESSURE GAUGE DN63 1/4 BSPPG	8700	BOTTOM ENTRY
PG63-RE-14.5	PRESSURE GAUGE DN63 1/4 BSPPG	14.5	REAR ENTRY
PG63-RE-23.2	PRESSURE GAUGE DN63 1/4 BSPPG	23.2	REAR ENTRY
PG63-RE-36.25	PRESSURE GAUGE DN63 1/4 BSPPG	36.2	REAR ENTRY
PG63-RE-58	PRESSURE GAUGE DN63 1/4 BSPPG	58	REAR ENTRY
PG63-RE-87	PRESSURE GAUGE DN63 1/4 BSPPG	87	REAR ENTRY
PG63-RE-145	PRESSURE GAUGE DN63 1/4 BSPPG	145	REAR ENTRY
PG63-RE-232	PRESSURE GAUGE DN63 1/4 BSPPG	232	REAR ENTRY
PG63-RE-362.5	PRESSURE GAUGE DN63 1/4 BSPPG	362	REAR ENTRY
PG63-RE-580	PRESSURE GAUGE DN63 1/4 BSPPG	580	REAR ENTRY
PG63-RE-870	PRESSURE GAUGE DN63 1/4 BSPPG	870	REAR ENTRY
PG63-RE-1450	PRESSURE GAUGE DN63 1/4 BSPPG	1450	REAR ENTRY
PG63-RE-2320	PRESSURE GAUGE DN63 1/4 BSPPG	2320	REAR ENTRY
PG63-RE-3625	PRESSURE GAUGE DN63 1/4 BSPPG	3625	REAR ENTRY
PG63-RE-5800	PRESSURE GAUGE DN63 1/4 BSPPG	5800	REAR ENTRY
PG63-RE-8700	PRESSURE GAUGE DN63 1/4 BSPPG	8700	REAR ENTRY



## Test

### Gauges

#### Gauges

#### Digital Pressure Gauge



Part Number	Description	BAR	Style
PG-DG80-700BAR	DIGITAL PRESSURE GAUGE	700	BOTTOM ENTRY

### Gauge Accessories

#### Gauges

#### Gauge Adaptor to BSPT Male



Part Number	Description	BSPF (Gauge)	BSPT M
QAAE04G	GAUGE ADAPTOR TO BSPT MALE	1/4	1/4

#### Gauge Accessories

#### Protective Boot



Part Number	Description
DIGIBOOT	DIGITAL TEST GAUGE BOOT 80MM

Gauge protector to suit Digital Gauge.  
\*Skin only - Gauge not included.

#### Gauge Accessories

#### Gauge Bracket



Part Number	Description	Style
PG63-RE-GB	PRESSURE GAUGE BRACKET DN63	TO FIT REAR ENTRY



## Test

### Diagnostic Test Points

#### Diagnostic Test Points

#### Male Test 20



Interchanges with Stauff Test 20, Parker EMA3 series.

Part Number	Pressure Rating/ BAR	Female Thread	Rated Flow Rate L/M
KQTPD02	620	1/8 BSPPM	0.8
KQTPD04	620	1/4 BSPPM	0.8
KQTPE04	620	1/4 BSPTM	0.8
KQTPK07	620	7/16 JIC F	0.8
KQTPP07	620	7/16 UNO M	0.8
KQTPP09	620	9/16 UNO M	0.8
KQTPR10X1	620	M10*1.0	0.8
KQTPR10X1.25	620	M10*1.25	0.8
KQTPR12X1.5	620	M12*1.5	0.8
KQTPR14X1.5	620	M14*1.5	0.8
KQTPR16X1.5	620	M16*1.5	0.8

#### Diagnostic Test Points

#### Female Test 20



KQTPFAS04	620	1/4 BSPPF (GAUGE)	0.8
-----------	-----	-------------------	-----

#### Diagnostic Test Points

#### ISO15171 / SAEJ1502 420 BAR



Interchanges with Inteva 136 series, Faster DF series, Parker PD series.

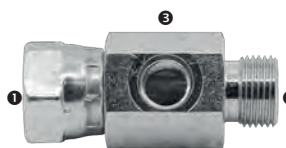
Part Number	Pressure Rating/ BAR	Thread Style	Rated Flow Rate L/M	ISO Coupler Body Size	Male Tip Diameter ø
KQFFTP-04F-BSPP	400	1/4 BSPP F	2	6.3	12.60
KQFFTP-04F-BSPTF	400	1/4 BSPT F	2	6.3	12.60
KQFFTP-04M-BSPTM	400	1/4 BSPT M	2	6.3	12.60
KQFFTP-04F-UNO	400	7/16 UNO F	2	6.3	12.60
KQFFTP-04M-UNO	400	7/16 UNO M	2	6.3	12.60
KQFFTP-04F-NPTF	400	1/4 NPT F	2	6.3	12.60
KQFFTP-04M-NPTM	400	1/4 NPT M	2	6.3	12.60

## Test

### Test Tees

#### Test Tees

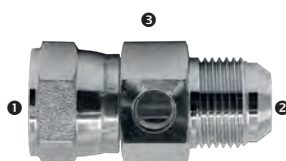
#### BSPP Female x BSPP Male x UNO Female



Part Number	1 BSPP F	2 BSPP M	3 UNO F
QTEADPFS040407	1/4	1/4	7/16
QTEADPFS060607	3/8	3/8	7/16
QTEADPFS080807	1/2	1/2	7/16
QTEADPFS121207	3/4	3/4	7/16
QTEADPFS161607	1	1	7/16

#### Test Tees

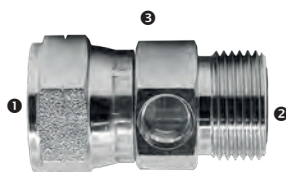
#### JIC Female Swivel x JIC Male x UNO Female



Part Number	1 JIC F S/W	2 JIC M	3 UNO F
QTEKL PFS07	7/16	7/16	7/16
QTEKL PFS090907	9/16	9/16	7/16
QTEKL PFS121207	3/4	3/4	7/16
QTEKL PFS141407	7/8	7/8	7/16
QTEKL PFS171707	1 1/16	1 1/16	7/16
QTEKL PFS212107	1 5/16	1 5/16	7/16
QTEKL PFS262607	1 5/8	1 5/8	7/16

#### Test Tees

#### ORFS Female x ORFS Male x UNO Female



Part Number	1 ORFS F	2 ORFS M	3 UNO F
QTEVWPFS090907	9/16	9/16	7/16
QTEVWPFS111107	11/16	11/16	7/16
QTEVWPFS131307	13/16	13/16	7/16
QTEVWPFS161607	1	1	7/16
QTEVWPFS191907	1 3/16	1 3/16	7/16
QTEVWPFS232307	1 7/16	1 7/16	7/16







# NEWS FLASH

*Our online newsletter and news hub keep you in the know.*

## NEWSLETTER SIGN-UP

Have you been keeping up with everything Taipan?

Stay informed on:

- New product lines
- Company announcements
- Industry developments
- Business support

Make sure you don't miss out on all this and so much more with our free, interactive, online newsletter, The Swage Press, sent direct to your inbox.

Sign-up to get your monthly fix by heading to:  
[www.taipan.com.au/subscribe/](http://www.taipan.com.au/subscribe/)

## VISIT OUR NEWS HUB

Looking for helpful articles, hints, tips, and links to educational material?

We have customised all of our content to suit Taipan account holders and trade professionals.

[www.taipan.com.au/news/](http://www.taipan.com.au/news/)



**TAIPAN**  
Hydraulic Hose Systems





# ***SERVICE WITH A DIFFERENCE***

*At Taipan, we want our customers to think of us as more than just a supplier. With the aim of creating partnerships, we are here to provide service like you have never experienced before.*

Whether you want to talk about your business goals, opportunities and challenges, we are here to help. The better we understand our customers' businesses, the more likely it is we can find ways to assist.

So don't feel shy about having a long chat about your short, medium and long-range objectives for your business or things that are holding you back. If you think there's something we can do for you, don't hesitate to ask.

LET'S TALK!  
Call **1300 654 782**



**TAIPAN**  
Hydraulic Hose Systems



We are proudly Australian  
owned and operated



Taipan Hydraulics has been in  
operation for over 30 years

**2500+**  
**ADAPTORS**

**6500+**  
**PRODUCTS**

We stock a massive range of  
quality hydraulic hoses and  
adaptors



**TAIPAN**  
Hydraulic Hose Systems





# TAIPAN

Hydraulic Hose Systems

#### CABOOLTURE

11-13 Lear Jet Drive  
Caboolture, QLD 4510  
Ph: 07 5428 1211  
Fax: 07 5428 1311

#### ROCKLEA

41 Shettleston Street  
Rocklea, QLD 4106  
Ph: 07 3274 3433  
Fax: 07 3274 3477

#### ADELAIDE

Warehouse 1  
Lot 552 Wilkins Road  
Wingfield, SA 5013  
Ph: 08 8448 3969

#### MELBOURNE

23 Endeavour Way  
Sunshine West, Vic 3020  
Ph: 03 9109 2109  
Fax: 03 8317 9049

#### PERTH

3 Mordaunt Cct  
Canning Vale, WA 6155  
Ph: 08 9456 5448  
Fax: 08 9256 1242

**CONTACT US 1300 654 782**

**[taipan.com.au](http://taipan.com.au)**